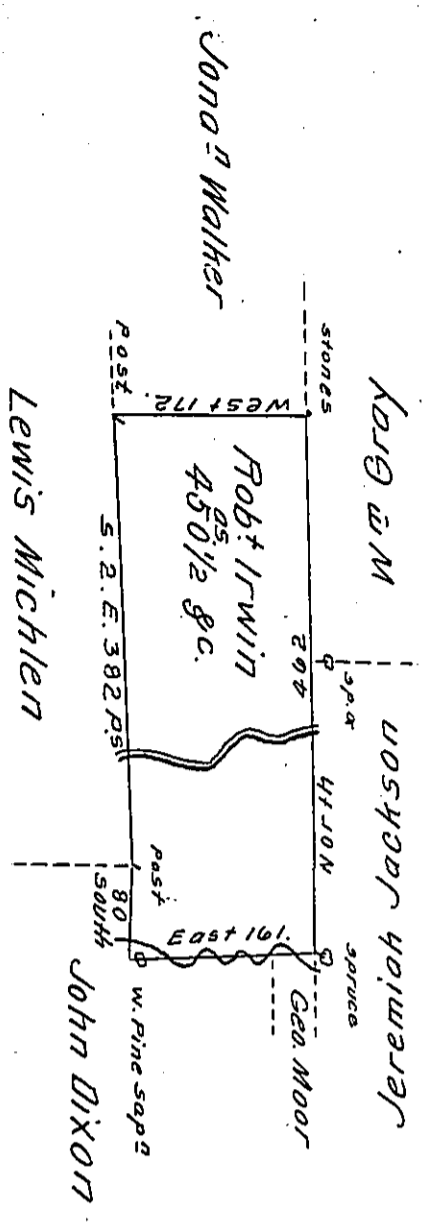


Butler -
Luzerne



A Draft of a tract of land Called — Situate on the waters of (obl.)
 Black Creek in the County of Northum^d Containing four Hundred
 & fifty 1/2 acres & allow^e Surv^d for Robt Irwin the 4th Day of Sep^r
 1793 by Virtue of a Warrant dated the 24th day of June 1793.

To Daniel Brodhead Esq^r }
 Surv^r Gen^l } by W^m Gray D. S.

IN TESTIMONY that the above is a copy of the original remaining on file in
 the Department of Internal Affairs of Pennsylvania, made
 conformably to an Act of Assembly approved the 16th day of
 February, 1833, I have hereunto set my Hand and caused
 the Seal of said Department to be affixed at Harrisburg,
 this sixth day of February 1911.

Henry Houch
 Secretary of Internal Affairs.